



# City of Highland Park

## Zoning Ordinance - District Map

### Multiple Family Residential Districts

	<b>RM1</b> Medium to High Density
	<b>RM1A</b> Medium to High Density
	<b>RM2</b> High Density
	<b>RO</b> High Density Res./Office

Multiple Family Use - Minimum Lot Area		Single Family Use
Per Lot	Per Unit	Minimum Lot Area
10,000 sq. ft.	2,904 sq. ft.	7,000 sq. ft.
21,780 sq. ft.	1,980 sq. ft.	7,000 sq. ft.
21,780 sq. ft.	1,442 sq. ft.	7,000 sq. ft.
21,780 sq. ft.	871 sq. ft.	7,000 sq. ft.

### Single Family Residential Districts

	<b>R1</b> Country Estate
	<b>R2</b> Country Home
	<b>R3</b> Low Density
	<b>R4</b> Low to Moderate Density
	<b>R5</b> Moderate Density
	<b>R5A</b> Moderate to Medium Density
	<b>R6</b> Medium Density
	<b>R7</b> Single- and Two-Family

Minimum Lot Area
130,680 sq. ft.
80,000 sq. ft.
40,000 sq. ft.
20,000 sq. ft.
12,000 sq. ft.
10,000 sq. ft.
7,260 sq. ft.
7,000/10,000 sq. ft.

### Commercial Districts

	<b>B1</b> Neighborhood Commercial		<b>B4-4</b> Service/Commercial
	<b>B1A</b> Waukegan-Bloom Neighborhood		<b>B4-5</b> Service/Commercial
	<b>B2</b> Ravinia Commercial		<b>B4-6</b> Service/Commercial
	<b>B3</b> Highway Commercial		<b>B5</b> Central Business District
	<b>B4</b> Service		<b>B4-BG</b> Briergate Commercial

### Overlay Districts

	<b>CDRO</b> Central District Residential Overlay
	<b>LFOZ</b> Lake Front Density & Character Overlay Zone
	<b>SLOZ</b> Small Lot Overlay
	<b>RWOD</b> Roger Williams Overlay District

### Industrial Districts

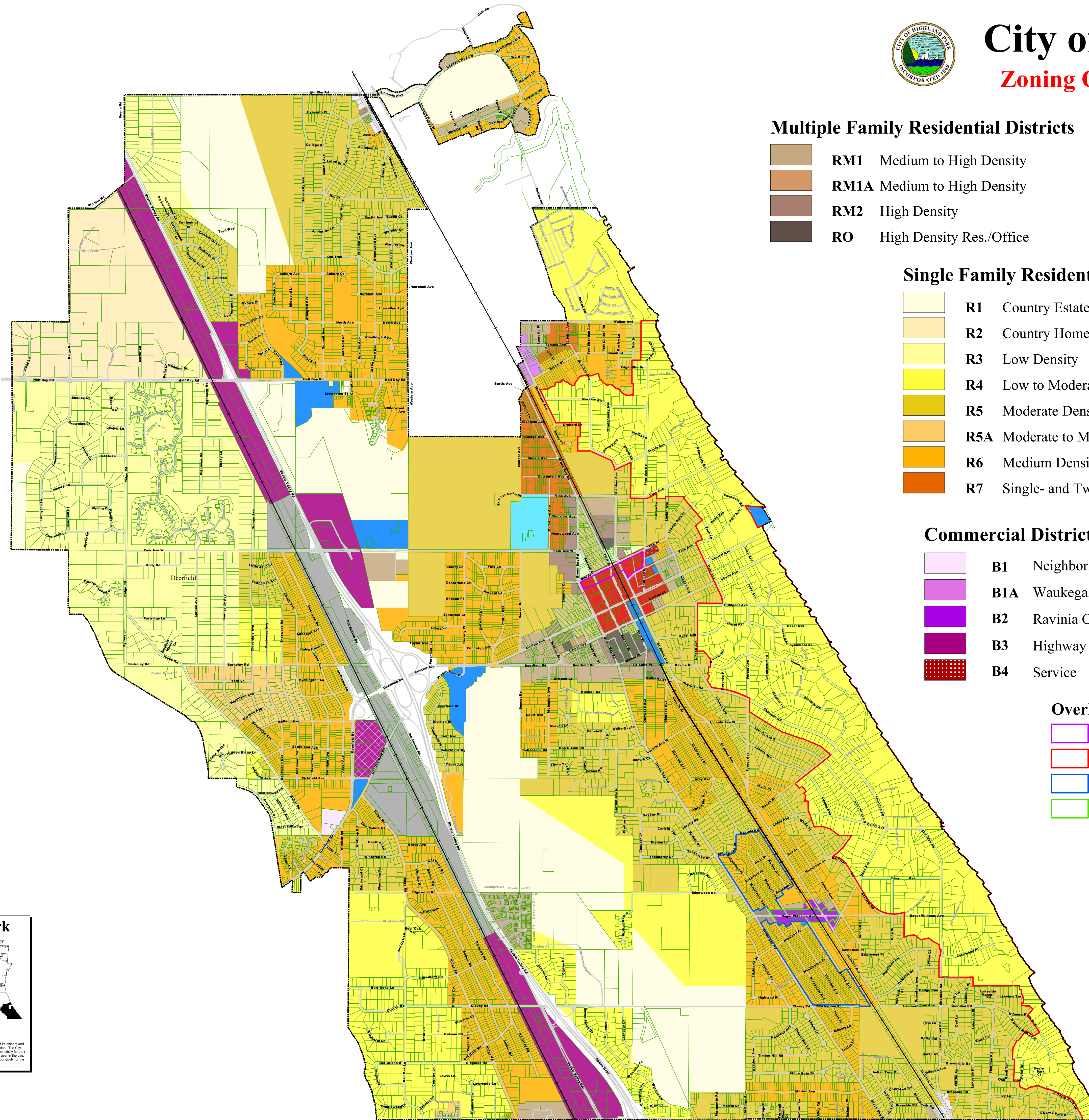
	<b>I</b> Light Industry
--	-------------------------

### Health Care

	<b>HC</b> Health Care
--	-----------------------

### Public Activity

	<b>PA</b> Public Activity
--	---------------------------



**City of Highland Park**

Lake County, Illinois

LIMITATION OF LIABILITY: The user agrees that all of its uses, knowingly and that the City and its officers and employees, and the user, of any liability arising from any use or omission of the City. The City makes no warranty as to the accuracy of the data and is not responsible for any errors or omissions. The City assumes no responsibility for the accuracy of any subsequent copies of this article.